



OKAHU IN THE NEWS

Volume 3, Issue 1

August 2016

Letter From The President



Dearest Members,

It's a privilege to serve as President of the Oklahoma City Association of Health Underwriters (OKAHU). I want to thank the Board of Directors for their support. They are dedicated group of professionals who work on behalf of the membership and it's a honor to serve with them. I also want to thank my predecessor, Leah-Anne Janway for her excellent leadership.

I joined the OKAHU in 2011, first serving as Chair of the Professional Development Committee, and then serving on the State Board from 2012 to 2016. Since it's inception, OKAHU has always worked hard.

Our task going forward is considerably more challenging given the nature of the industry. The health insurance industry, as a whole, has seen many changes in the past several years. In 2016, healthcare costs are projected to increase by 6.5% after plan changes¹ We see the private business sector continuing to struggle with complex and changing regulatory and compliance issues – ACA Reporting, Section 125, COBRA. Nearly 8 in 10 (77%) of employers lack confidence in public insurance exchanges as a viable alternative to employer-sponsored coverage²

Despite all these changes, 2015-2016 was a very productive year for our association. Our members are engaged at the local and state level and OKAHU continues to be a model chapter.

We recently inducted our new board members during our June 9th meeting. This included both voting board and committee chair positions. Remember you may always attend a board meeting and welcome all OKAHU members to come and see what goes on behind the scenes.

Our membership grew this year. Thanks to the membership/retention chair, Tom Tacheny, we now have over 143 members.

I wanted to personally thank our corporate sponsors. Look at our current list and support these companies who support us.

Look for upcoming CE course information, news and member events in our weekly eNews. We have a great year planned and I look forward to serving as your new President.

Pat Robertson, OKAHU President 2016-2017

¹Pricewaterhouse Coopers' Health Research Institute (HRI)

²2014 Health Care Changes Ahead Survey by Towers Watson

SAVE THE DATE

September 1, 2016 3:30 pm
OKAHU Board Meeting- Held via conference call. Call in number (641) 715-3580, Meeting ID 973-874-457

September 8, 2016 11:30 am
One Hour General CE Approved- The Changing Role of the Benefits Advisor Under the Affordable Care Act, Daniel Meylan- Presenter
Location: Quail Creek Country Club

October 6, 2016 3:30 pm
OKAHU Board Meeting
Location: BHJ Insurance Agency- 5532 N. Western Avenue, OKC, 73118

October 13, 2016 9:00 am
Three Hour CE Pending- Health Care Reform, Jan Dumont- Presenter.
Agenda:

9:00 am Breakfast
9:30-11:30 am Presentation
11:30-12:15 pm Lunch
2:15-1:15 pm Presentation
Cost: \$50 Member/\$75 Non-member
RSVP by Monday, October 10th
Location: Quail Creek Country Club

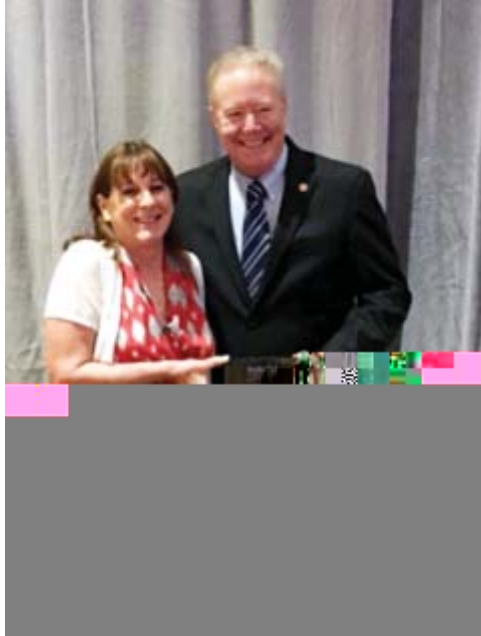
IN THIS ISSUE

- 2 NAHU 2016 Annual Convention
- 3 Recent Events-Happenings
- 5 Legislative Update/Social Media Tutorial
- 6 New Member Spotlight/Professional Development
- 7 Q&A with Wayne Pettigrew
- 8 Reminders
- 9 Board Roster/Member Anniversaries
- 10 Public Service
- 11 Corporate Sponsors
- 12 Photo Gallery



Soaring to New Heights- OKAHU Wins Presidential Citation Award

Oklahoma City Association of Health Underwriters recently received the Presidential Citation Award at the National Association of Health Underwriters' (NAHU) 86th Annual Convention and Exhibition in Albuquerque, NM. The event took place June 26-June 29, 2016.



Oklahoma City Association of Health Underwriters was recognized for this award for increasing chapter membership, retaining membership, sponsoring continued education courses, hosting speakers and presentations, bolstering relationships with industry partners, and meeting with state legislators.

"The leadership of NAHU members has a far-reaching impact on providing for the healthcare needs of individuals, families and business in their communities. We are grateful for Oklahoma City Association of Health Underwriters efforts to reach out to the public in order to strengthen membership and recognize them for those efforts with this well-deserved award," said NAHU CEO Janet Trautwein.

Oklahoma City Association of Health Underwriters was honored during the NAHU Annual Convention when NAHU President Don Goldmann presented the Presidential Citation Award to past President, Leah-Anne Janway.

"Oklahoma City Association of Health Underwriters exemplifies the dedication to providing the best opportunities for our members," said Pat Robertson, President of Oklahoma City Association of Health Underwriters. "This year, our chapter supported the Toby Keith Foundation's Kids Korral as our Public Service project and provided 10 CE credit hours to further our members' educational efforts. These projects and many others have set a standard of excellence in the health insurance industry that we are proud to represent."

The National Association of Health Underwriters represents 100,000 professional health insurance agents and brokers who provide insurance for millions of Americans.



Happenings -Recent Events



OKAHU Welcome our new President

It was with great honor that past OKAHU President, Leah-Anne Janway conducted the ceremony and swore in our new OKAHU President Pat Robertson. The June 9, 2016 meeting was a celebration of good will as Leah-Anne passed the gavel. Let's congratulate Pat and wish him well!



New 2016-2017 OKAHU Board Installed

On June 9, 2016 the new 2016-2017 OKAHU Board and Committee Members and were sworn in during our monthly meeting at Quail Creek County Club. Back row, left to right: Laurie Crow, Wayne Pettigrew, Devin Kampert, Pat Robertson, Tom Tachney, Andy Bigbie and Kemp Cole. Front row, left to right: Carrie Cox, Jana Pitt, Leah-Anne Janway, Debbie Buck, Jeanean South, Diane Barton-Lewis, Jimmy Johns, Connie Morgan and Jeff Walraven.



OKAHU - Health Underwriter of the Year

Andy Bigbie won this year's Okalahoma City Association of Health Underwriters and awarded "Person of the Year". It is presented to an active member who have contributed significantly above and beyond what is normally called for. Andy Bigbie was honored as this year's recipient. He was presented with his award by Awards Chair, Jeff Walraven.

Happenings -Recent Events



State Health Underwriter of the Year Award

State Health Underwriter of the Year Award was presented to Barry Wilson. Justin Lord presented the award. Unfortunately, Barry could not be present. His wife, Hermie, accepted on his behalf. In addition, Bill Warren, his close friend, spoke about Barry and why he felt the award represented Barry and what type of person, both personally and professionally he is.



Turnpike Trophy

Each year both the OKAHU and TAHU compete for a coveted "Turnpike Award". The award is won as a membership challenge between Tulsa and OKC state chapters of NAHU. This year OKAHU won the award, increasing its annual membership to 136 active members. This is the second year OKAHU won the award, with 2015 being the first time in five years. New incoming OSAHU President presented Tom Tacheney, OKAHU Membership Chair, with the coveted award. Go OKAHU!



Phillip Scholarship- OSAHU

Each year the OSAHU honors a single scholarly student with excellent grades. Harry Hanig, presented this year's recipient of the OSAHU Scholarship award. The OSAHU has been presenting this scholarship to worthy applicants for the past five years. This year's winner was Mary Elizabeth Hawley, daughter of Past President for TAHU, Stuart Hawley.



State President, The Gavel is passed

State President Wayne Pettigrew from OKC presenting Roger Flippo of Tulsa the incoming state President gavel.

Legislative Update

COMMITTEE MEMBERS NEEDED

Our new OKAHU Legislative Chairman, Leah-Anne Janway, is looking for members to join the Legislative Committee. This is an important committee so get involved.

Your OKC Legislative Committee is gearing up to provide the expertise necessary to give sound legislative advice to the Board of Directors.

Please consider joining the Legislative Committee. We pledge to be a source for OKC Members to address requests for legislative matters or concerns.

We have room for 8 other committee members. Join and be part of the public policy process. You may contact me at my new email address of YAYLAJ@cox.net.

We look forward to hearing from you,

Leah-Anne Janway, Chair and Connie Morgan, Vice-Chair



Social Media Tutorial Online

Are you new to Twitter or Facebook and looking to create an account to better promote your chapter or business?

Maybe, you are seeking to enhance your established social media presence by increasing your engagement and number of shares? Or, do you want to better understand the Twitter/Facebook lingo, get tips on how to effectively tweet and how to stay updated on trends within our industry?

Well, you're in for a treat! NAHU has created 17 step-by-step social media tutorials on how to properly use Facebook and Twitter. Each video is a YouTube video. Each ranges from 41 seconds to four minutes. Don't worry if you don't know how to create a post, what a hashtag is, or even how to "like" a post. With these modules, you will be a social media guru in no time!

Go to <http://www.nahu.org/media/tools/SocialMedia.cfm> for a complete resource for both OKAHU and NAHU members.

Other social media channels are LinkedIn and Google+. LinkedIn goes beyond personal profiles and status updates; it's a great resource for networking, influencer relationship building, and lead generation opportunities through paid programs. Because users visit the site for purely work-related purposes, LinkedIn lends itself to making business connections. Google+ is quickly becoming an essential part of any business's social media strategy, but it's also a must for lead generation. Already boasting 90 million users, Google is making Google+ accounts mandatory for all Gmail users and those who want to post comments on YouTube. Google+ also now plays a major role in SEO.

Social media may be a newer channel set for insurance professionals, but from the data available and current trends it is apparent that social marketing is now part of the enterprise marketing mix. Visit NAHU.org and get on the road to social media success.

Member Spotlight—New Members

Please welcome our newest members to OKAHU!!!

Felicia Adcox

Bigbie Hensley Janway Insurance Agency
felicia@bhjins.com
405-235-0036

Tara Evins

Medley/Turrentine & Associates
tevins@medley-insurance.com

Todd Bothwell

Transamerica Agency Network
Insurance Agency
todd.bothwell@transamericanetwork.com
(405) 608-8899

Neal Heston

3000 Insurance Group
neal@3000ig.com
(405) 521-1600

Audra Parker

Delta Dental of Oklahoma
aparker2@DeltaDentalOK.org
405-607-4751

Professional Development

It is a very hard task every year to search for valuable, meaningful, continuing educations for our association members. This year it has been decided by the OKAHU Board to only have one large CE Symposium which will happen in Spring of 2017.

During the Fall, many of our colleagues are busy with 4th quarter renewals. We are aware that it's difficult to attend anything that is not client related. With that said, the OKAHU still wants to offer CE hours in September and October as our members still need to log continuing education. We are working to get the NAHU president, and a highly touted speaker, here for November. This would leave December without any CE planned at this time.

A few questions for you....

- 1) Would you like to have a Christmas Party in December?
- 2) NAHU is offering another Webcast that we can get CE Approved for either October 5 or December 1. Would you attend if we can get it CE approved?
- 3) Would you attend a CE planning session if we made it open to the membership?

We want your input on these topics, so please send your thoughts/comments to Carrie Cox at carrie.cox@nfp.com.

We would really like your input and hope that you will respond. Please contact Professional Development Chair, Carrie Cox at carrie.cox@nfp.com or by phone at 405-513-8958 or you may visit with co-chair, Diane Barton at diane_barton@ajg.com or by phone at 405-471-5015. Thank you.

Carrie Cox, Professional Development Chair

Join a Committee

It's never too late to join a OKAHU committee. It's a great way to meet other professional in your industry and educate yourself along the way.

THE OKLAHOMAN - Q&A with Wayne Pettigrew

Business Writer, Paula Burkes interviewed our own, President Elect, Wayne Pettigrew for The Oklahoman newspaper. The Oklahoman is the largest daily newspaper in Oklahoma and is the only regional daily that covers the Greater Oklahoma City area. The article ran in the August 9, 2016 edition. Wayne was asked to speak on the topic of how the “Final health reform rule prohibits discrimination for transgender-related services”. In case you missed it, here’s a reprint of the that Q&A/article.



Wayne Pettigrew, President of Vanguard Benefits, LLC

Q: So does this mandate transgender services?

A: No. It does prohibit discriminatory exclusions or limitations from being placed on such benefits. Fully insured groups may not exclude gender reassignment surgery or other benefits based on a discriminatory factor, but they could be limited on a nondiscriminatory factor such as clinical criteria.

Q: Does the final rule include a religious exemption?

A: No. But the final rule doesn’t displace existing protections for religious freedom and conscience.

Q: What other provisions are included in Section 1557?

A: The final rule requires entities with 15 or more employees to have a grievance procedure and compliance coordinator. The final rule also requires that entities post notices of nondiscrimination in at least the top 15 non-English languages spoken in the state in which an entity does business. The HHS Office of Civil Rights will provide sample notices in all languages.

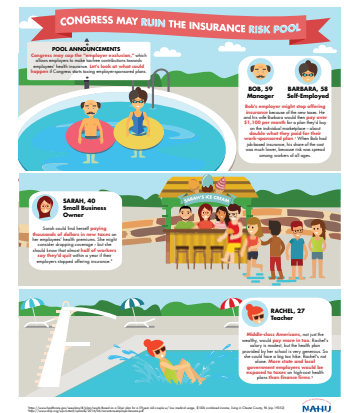
Q: Can you explain the recently issued final rule to Section 1557 of the Affordable Care Act?

A: On May 18, the U.S. Department of Health and Human Services published a final rule to implement Section 1557 of the Affordable Care Act, which prohibits discrimination in health coverage and care based on race, color, national origin, age, disability, and sex. These provisions incorporate existing federal nondiscrimination law and policy and also contain some new protections. The final rule specifically addresses discrimination against transgender individuals and established certain accessibility standards for individuals with limited English proficiency.

Q: What does this mean for insured group health plans?

A: Beginning with their plan years that occur after Jan. 1, insured group health plans no longer can have blanket exclusions for transgender related services when medically necessary. Self-insured groups must generally amend their plan documents and submit any limitations on such services to reinsurance carriers for approval.

Infographics on the Employer Exclusions



NAHU has developed two new infographics which talk about the employer exclusion, their stories and to convey the information in a fun way- check it out!

Click one of two links below to view the employer exclusion infographic and the employer exclusion stories infographic. Both were recently featured on NAHU.org.

Employer Exclusion Infographic: <http://bit.ly/2bKhJXi>

Employer Exclusion Stories Infographic: <http://bit.ly/2bKi78o>

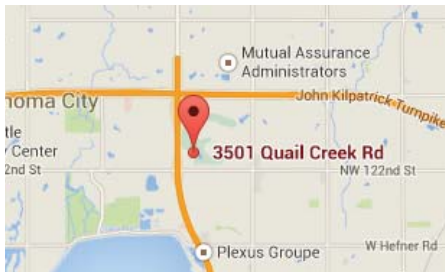
Reminders!

Monthly General Meetings

Our monthly membership meetings are held on the **second Thursday of each month at 11:30 am.**

Quail Creek Country Club (QCCC) is our host for our monthly meetings and CE Seminars. Bring a colleague with you to our next meeting-all are welcome.

QCCC address is 3501 Quail Creek Road, OKC, 73120.



Members, please remember that the Annual Budget, Monthly Treasurer's Report and Board Meeting Minutes are available for your review. Email requests to Carrie Cox at carrie.cox@nfp.com if you would like further information.

Purchase your OKAHU travel mugs!



Keep your beverages hot or cold in style by letting the world know you're a proud member of OKAHU! You can purchase mugs for \$10 each at the membership meetings!

2016 Lunch Prices

Members \$25

Non-members \$50

GOOD NEWS!

You can now PAY FOR YOUR MONTHLY LUNCHEON by clicking on the following Link:

<https://squareup.com/store/oklahoma-city-association-of-health-underwriters-inc>

Visa, Mastercard, or a Check are acceptable forms of payment. Simply select the above link, ENTER: Date of Event for the Invoice/Reference #, and enter your credit card information.

Operation Shout

Take Action Today!

National Association of Health Underwriters (NAHU) is the leading professional association for health insurance agents, brokers, general agents and consultants. One of the primary ways we engage in advocacy for the consumer is by supporting legislation that ensures the future and stability of the insurance industry. Through Operation SHOUT, you as a member have the opportunity to participate in this exciting process.

Go to <http://cqrcengage.com/nahu/home>.

From there go to the Federal Action Center to learn more about NAHU's priority legislative issues and bills.

If you Take Action - print out your Thank You Confirmation. Bring that page with you to our monthly luncheon/meeting and your name will be put in the hopper for a free lunch or mug. Remember, we are most effective when we speak with one voice. We encourage you to use the information and resources on NAHU.org.

BOARD ROSTER 2016-2017

Pat Robertson, President

Wayne Pettigrew, President Elect

Leah-Anne Janway, Past President/Legislative Chair

Devin Kampert, Vice President

Carrie Cox, Secretary/Education/Program Chair

Andy Bigbie, Treasurer

Kemp Cole, Corporate Sponsors

Diane Barton-Lewis, Director

Jimmy Johns, HUPAC Chair

Jeff Walraven, Awards

Ann Borah, Membership/Retention

Connie Morgan, Director

Laurie Crow, Public Service

Deborah Buck, Communications Chair

Jana Pitt, Hospitality Chair

Jeanean South, Media Relations Chair

Tom Tacheny, Website Chair



Business Address
PO Box 12146
Oklahoma City, OK 73157

OKAHU is a non-profit organization dedicated to serving the public by promoting activities and ethical conduct of members through communication, continuing education and increasing industry knowledge. OKAHU members also work to monitor and influence and activities of the state and federal legislatures. We work hard to protect the health care consumer's future.

Member Anniversaries

We would like to honor our long term association members as often as we can, so we've done a little research and next time you see one of the members listed below, be sure to thank them for being part of our association for so many years. In the next newsletter we'll look at the next generation that has joined OKAHU.

Joined NAHU

Association Member

2004

Chris Engel
Sherri Pryor
Thomas Schmidt

2005

Gregory Buwick
Lisa Fortenberry
Mary Steichen
Linda Voss

2006

Michael Brown
Shelby Faust
Tyler LaReau
LaNell Osmond
Joseph Palmer

Refer a Friend!

The National Association of Health Underwriters (NAHU) represents more than 100,000 licensed health insurance agents, brokers, consultants and benefit professionals through more than 200 chapters across America. NAHU members service the health insurance needs of large and small employers as well as people seeking individual health insurance coverage.

Bring a colleague to one of our luncheon/CE meetings and let them see all the advantages of membership, both in being a member of NAHU and in OKAHU.

As part of a NAHU membership you'll receive:

- Legislative Advocacy
- Professional Development, including Local Meetings and CE
- Networking
- HIU Magazine
- Compliance Resources
- Member-only Discounts

Public Service



**Play Korral the ACE at our monthly luncheon
and take a chance on
creating a win/win for you and
the OK Kids Korral!”**

Here's what's been going on:

- This past May, the OKAHU donated \$150.00 to the Toby Keith Foundation's Kids Korral charity
- In May 12th, we played Korral the Ace with the winner's pot at \$185. Pat Robertson pulled the Eight of Hearts
- On June 9th, we sold 42 tickets for making the pot \$206 Nancy Cody pulled the King of Hearts
- On August 11th, Connie Morgan pulled the Jack of Hearts—still no winner

Our winnable pot is now \$218

Cross your fingers for an September WINNER....



Ways to donate

There are different ways to give. Donate food, cleaning supplies, gas cards, gift cards (Starbucks, Target even Braums). Most used items include laundry detergent, hand soap, bathroom tissue, disinfecting wipes, Playstation and WiiU games and all kid-friendly movies. They also have an Amazon Wishlist. Please review their full wish list and Amazon list at <https://www.tobykeithfoundation.org/index.php?get-involved/donate-from-our-wish-list> or send your donated items to: The Toby Keith Foundation 818 N.E. 8th Street, Oklahoma City, OK 73104

OKAHU has selected the Toby Keith Foundation's Kids Korral as our Public Service project for another year. The Toby Keith Foundation exists to encourage the health and happiness of pediatric cancer patients. The Kids Korral is a cost-free home for children undergoing cancer treatment. We selected this project because it is local and is health oriented, a perfect match for Oklahoma City Association of Health Underwriters.

Mission

The Toby Keith Foundation exists to encourage the health and happiness of pediatric cancer patients and to support OK Kids Korral, a cost-free home for children undergoing treatment for cancer.

16 Ways to Volunteer to Help the Korral Families

- #1: Spread the word by sharing your story – Volunteers, house guests, or donors, share your story about us on Facebook and Twitter
- #2: Prepare and serve a home-cooked meal
- #3: Bring homemade cookies or cupcakes for families, or help children bake and decorate them
- #4: Offer your professional skills to families – give free haircuts, massages, or manicures
- #5: Organize a craft project for children staying with us
- #6: Answer the phones, greet guests or do light office work
- #7: Host a pizza party, ice cream social, or popcorn & movie night for families staying at OK Kids Korral
- #8: Host a scrapbooking party at the Korral for moms, dads & kids
- #9: Help decorate for the holidays
- #10: Lead a yoga, exercise or relaxation class for parents & children
- #11: Lead a “Coins for the Korral” at your school to collect loose change for OK Kids Korral
- #12: Initiate a toy or book drive so we can restock our toy room and library
- #13: Make welcome goodie bags and care packages for families
- #14: Collect new hotel toiletries and donate them for families
- #15: Collect new toothbrushes, toothpaste and floss to donate to OK Kids Korral
- #16: Help us keep our home clean and work with us to disinfect toys and play equipment

More Information

For more information, contact Public Service Chairperson, Laurie Crow at 405-416-8888 or laurie.crow@ampublic.com or got to <https://www.tobykeithfoundation.org/>.

Corporate Sponsors 2016-2017



Brad Johnson
johnsonB9@aetna.com
Phone: 405-945-1206



Laurie Crow
Laurie.crow@ampublic.com
Phone: 405-416-8888



Mike Zundel
mzundel@assurity.com
Phone: 402-437-4344



BlueCross BlueShield
of Oklahoma

Julie Rethmeyer
Jrethmeyer@bcbsok.com
Phone: 918-551-3366



Lan Miller
lmiller@deltadentalok.org
Phone: 405-607-2134
Fax: 405-607-2132



Greg Holley
greg@flexplanadmin.com
Phone: 918-524-6321
Fax: 918-524-6335



Tom Bartlett
Tom.Bartlett@healthsmart.com
Phone: 405-607-2629



Kemp Cole
kjcole@kemper.com
Phone: 405-848-7931



Russ Angell
rangell@leaderslife.com
Phone: 918-254-0200



Dennis Grubbs
dgrubbs@clfrates.com
Phone: 405-290-5674
Fax: 405-290-5771



Gentrie Pool
Gentrie.pool@sterlingadministration.com
Phone: 817-454-9304



Connie Morgan
connie@suewilsonbrokerage.com
Phone: 405-843-8300



www.sunlife.com



Zack Taber
zack@taberbrokerage.com
Phone: 405-235-4610
Fax: 405-235-4630



www.tasconline.com



Steve Lanier
Steve_lanier@uhc.com
405-415-8148



Scott Battaglia
sbattaglia@unum.com
Phone: 800-442-0915
Fax: 972-892-1440



Pat Robertson
pat@wrcins.com
Phone: 800-523-3879

Photo Gallery

June 9th Meeting and Summer Social

